



## CEILING TILES & SUSPENDED CEILING GRID SYSTEM BROCHURE

Sr. No.		Page No.
1.	About KOHINOOR DECOR	3
2.	Ceiling Tiles Range	4
	Acoustic Mineral Fiber Ceiling Tiles	5
	Gypsum Ceiling Tiles	13
	Metal Ceiling Tiles	16
	Perforated Ceiling Tiles	21
	PVC Laminated Ceiling Tiles	26
3.	Suspended Ceiling Grid System	30
	Components of T-Grid	31
4.	Notes	35
5.	Contact Us	36

# About KOHINOOR DECOR

## Who we are?

Incorporated in the year 1998, we 'Kohinoor Decor' are a sole proprietorship-based firm engaged as the foremost wholesale supplier and service provider for Interior designing and False Ceiling Products (Gypsum Plaster, Plaster of Paris, Gypsum Boards, P.O.P. Sheets, Metal Framing Accessories – G.I. Ceiling Sections, Aluminium Ceiling Tiles, Metal Ceiling Tiles, PVC Panels) and False Ceiling Services. Our products are high in demand due to their premium quality and affordable prices. Furthermore, we ensure to timely deliver these products to our clients, through this we have gained a huge client's base in the market. Under the direction of our mentor 'Mr. Mohd. Ilyas Sheikh (Proprietor)', we have been able to achieve a reputed name in the industry.

We, at Kohinoor Decor, one of the most recognized and leading manufacturing and trading firms in Nagpur, provide you with different types of Interior Designing, Gypsum False Ceiling (Residential/ Commercial), Installations, Maintenance or repairing at a professional rate of prescribed designs.

Our business is generally known for its next level ceiling designs, their resistance to extreme weather conditions, ease of services provided and skilled installations by workers.

We also take part in trading all varieties of ceiling products (Gypsum Powder, Gypsum Boards, Ceiling Tiles, Ceiling Sections, Gypsum and Plaster of Paris sheets) at a much cost-effective rate.

## From our Executive Owner,

With my 25 years of experience in this stream of interior designing, false ceiling contracts and all related Gypsum works, I have been able to recognize every bit of trading and supplying every commodity in this scenario.

Our business usually deals with better customer satisfaction with every ease of better execution of the work. Our executing staff never fails to perform their tasks regardless of the direction they have been given.

### Mohd. Ilyas Sheikh

Owner and Founder at Kohinoor Decor, Nagpur



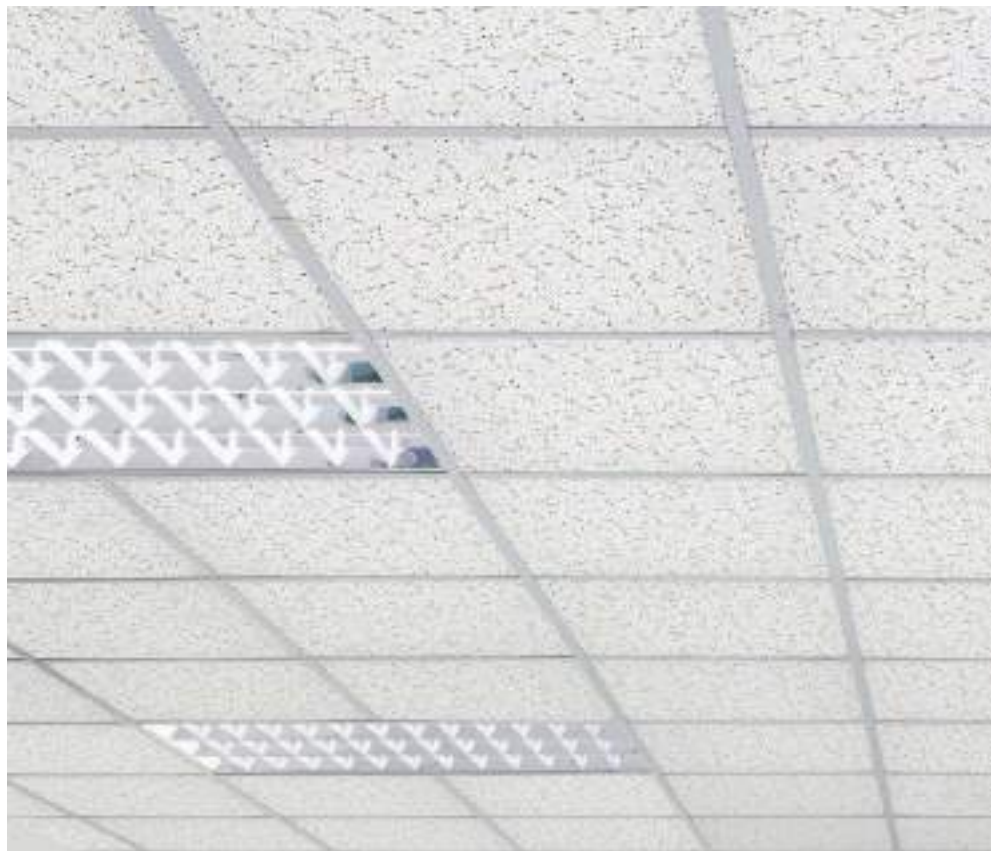
# CEILING TILES RANGE



The Grid Ceiling Systems are lightweight lay-in and clip-in systems available in concealed or exposed grid options. The ceiling has substantial sound reduction and absorption qualities. We offer 2x2 and 2x4 sized Grid ceiling tiles and in various patterns. Depending on the requirements of design and space, the tiles offer a wide range of decorative effects. Pre-finish options include smooth, textured, patterned, or perforated effects. One type of suspended ceiling is made up of Acoustic Ceiling Tiles (ACT) and a stick-built grid system. Sometimes called a lay-in ceiling, this type of system is versatile, durable, and cost effective.

We are a trusted name in trading and supplying a wide array of Grid Ceiling. The range of our products is widely renowned for its excellent quality and is widely used in the construction industry. We make sure to offer these products in compliance with the international quality standards. Our product range is widely used in mineral fiber ceiling.

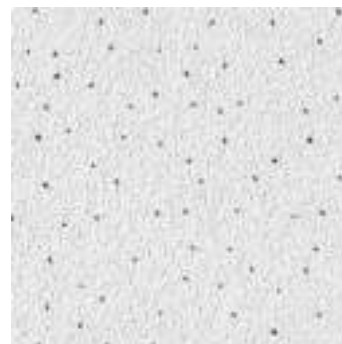
## Acoustic Mineral Fiber Ceiling Tiles



Our mineral fiber ceiling tiles have excellent sound absorption and light reflection qualities. These tiles also offer thermal resistance and humidity resistance. Mineral fiber suspended ceiling tiles are also useful to hide different weirs, fire alarm, water sprinkler, smoke detectors and AC pipes. Mineral fiber acoustic ceiling tiles are mostly used in IT companies, offices, showrooms, shops, hospitals, hotels, schools and colleges.

All suspended ceiling tiles and suspended ceiling system are used with different grids such as 15T, 24T, 15T select and 15T silhouette-out grid. They are also known for ceiling tile grid system. We do provide installation services for false ceiling tiles in reasonable rate and quality of service.

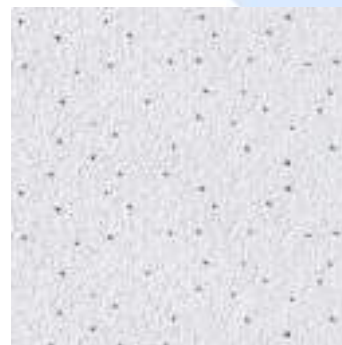
## USG Boral OLYMPUS MAX Ceiling Tile



<b>Material</b>	Mineral Fiber
<b>Brand</b>	USG Boral
<b>Ceiling Type</b>	Exposed Grid
<b>Noise Reduction Coefficient (NRC)</b>	0.70
<b>Humidity Resistance</b>	99% RH
<b>Thickness</b>	19 mm
<b>Size (ft)</b>	2 x 2   2 x 4
<b>Dimensions (mm)</b>	600 x 600 x 19 600 x 1200 x 19
<b>Edge Profile</b>	Squared   Tapered

With micro perforations that provide a smoother look and ideal sound absorption, these panels offer upscale appearance at a mid-range price.

## USG Boral OLYMPIA MICRO CLIMA+ Ceiling Tile



<b>Material</b>	Mineral Fiber
<b>Brand</b>	USG Boral
<b>Ceiling Type</b>	Exposed Grid
<b>Noise Reduction Coefficient (NRC)</b>	0.50-0.60
<b>Humidity Resistance</b>	99% RH
<b>Thickness (mm)</b>	16   19
<b>Size (ft)</b>	2 x 2   2 x 4
<b>Dimensions (mm)</b>	600 x 600 x 16 600 x 1200 x 16 600 x 600 x 19 600 x 1200 x 19
<b>Edge Profile</b>	Squared   Tapered

Olympia Micro Clima Plus is well suited for controlling the acoustic level at restaurants, hotels, conference areas, lobby regions, classrooms and retail stores. Powered with the ability to balance sound energy level, it is aimed at reducing the intensity of the volume produced.



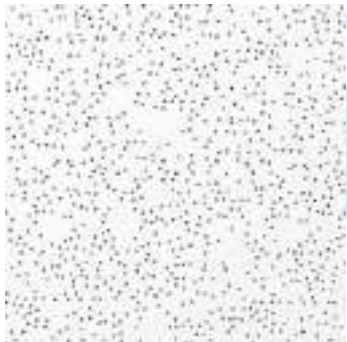
### USG Boral ECLIPSE CLIMA+ Ceiling Tile



<b>Material</b>	Mineral Fiber
<b>Brand</b>	USG Boral
<b>Ceiling Type</b>	Exposed Grid
<b>Noise Reduction Coefficient (NRC)</b>	0.60-0.70
<b>Humidity Resistance</b>	99% RH
<b>Thickness</b>	19 mm
<b>Size (ft)</b>	2 x 2   2 x 4
<b>Dimensions (mm)</b>	600 x 600 x 19 600 x 1200 x 19
<b>Edge Profile</b>	Squared   Tapered

Fabricated to multiply sound resistance ability and anti-sagging calibre, Eclipse Clima Plus Acoustic Ceiling Panel is a finely textured panel that is famed for maintaining stable performance.

### Gyproc CELOTEX PIN Ceiling Tile



<b>Material</b>	Mineral Fiber
<b>Brand</b>	Gyproc by Saint Gobain
<b>Ceiling Type</b>	Exposed Grid
<b>Noise Reduction Coefficient (NRC)</b>	>=0.55
<b>Humidity Resistance</b>	95% RH
<b>Thickness</b>	15 mm
<b>Size (ft)</b>	2 x 2
<b>Dimensions (mm)</b>	595 x 595 x 15
<b>Edge Profile</b>	Squared   Tapered

This ceiling panel has the pin perforated surface design on the face side.

### Gyproc CELOTEX FINE FISSURED Ceiling Tile



<b>Material</b>	Mineral Fiber
<b>Brand</b>	Gyproc by Saint Gobain
<b>Ceiling Type</b>	Exposed Grid
<b>Noise Reduction Coefficient (NRC)</b>	>=0.55
<b>Humidity Resistance</b>	95% RH
<b>Thickness</b>	15 mm
<b>Size (ft)</b>	2 x 2
<b>Dimensions (mm)</b>	595 x 595 x 15
<b>Edge Profile</b>	Squared   Tapered

This ceiling panel has the pin perforated surface design on the face side.

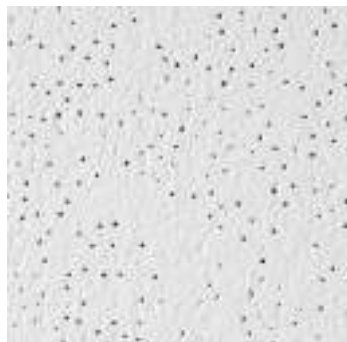
### Gyproc CERTAINTED SAND MICRO Ceiling Tile



<b>Material</b>	Mineral Fiber
<b>Brand</b>	Gyproc by Saint Gobain
<b>Ceiling Type</b>	Exposed Grid
<b>Noise Reduction Coefficient (NRC)</b>	>=0.50
<b>Humidity Resistance</b>	90% RH
<b>Thickness</b>	15 mm
<b>Size (ft)</b>	2 x 2
<b>Dimensions (mm)</b>	595 x 595 x 15
<b>Edge Profile</b>	Squared   Tapered

This ceiling panel has the sand finish surface design on the face side along with micro perforations. BioShield treatment included for added mold and mildew resistance.

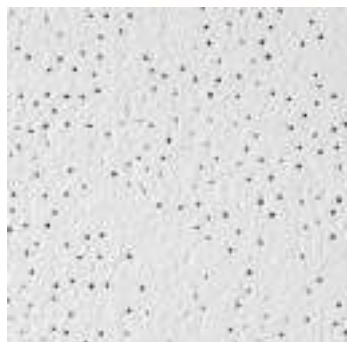
## Armstrong CLASSIC LITE Ceiling Tile



<b>Material</b>	Mineral Fiber
<b>Brand</b>	Armstrong Ceiling Solutions
<b>Ceiling Type</b>	Exposed Grid
<b>Noise Reduction Coefficient (NRC)</b>	0.55
<b>Humidity Resistance</b>	99% RH
<b>Thickness</b>	16 mm
<b>Size (ft)</b>	2 x 2   2 x 4
<b>Dimensions (mm)</b>	600 x 600 x 16 600 x 1200 x 16
<b>Edge Profile</b>	Squared   Tapered

**APPLICATION AREAS:** Offices / Education / Healthcare / Retail / Corridors / Lobbies

## Armstrong CLASSIC MAX Ceiling Tile



<b>Material</b>	Mineral Fiber
<b>Brand</b>	Armstrong Ceiling Solutions
<b>Ceiling Type</b>	Exposed Grid
<b>Noise Reduction Coefficient (NRC)</b>	0.70
<b>Humidity Resistance</b>	99% RH
<b>Thickness</b>	17 mm
<b>Size (ft)</b>	2 x 2   2 x 4
<b>Dimensions (mm)</b>	600 x 600 x 17 600 x 1200 x 17
<b>Edge Profile</b>	Squared   Tapered

**APPLICATION AREAS:** Offices / Call Centre / Healthcare / Education / Conference Rooms / Auditoriums / Corridors / Lobbies / Libraries

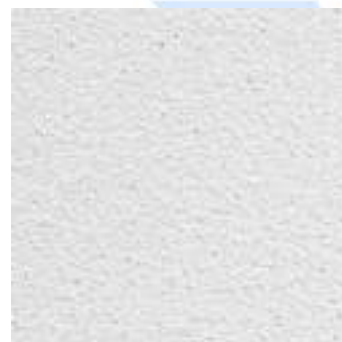
## Armstrong DUNE Ceiling Tile



<b>Material</b>	Mineral Fiber
<b>Brand</b>	Armstrong Ceiling Solutions
<b>Ceiling Type</b>	Exposed Grid
<b>Noise Reduction Coefficient (NRC)</b>	0.50
<b>Humidity Resistance</b>	99% RH
<b>Thickness</b>	16 mm
<b>Size (ft)</b>	2 x 2   2 x 4
<b>Dimensions (mm)</b>	600 x 600 x 16 600 x 1200 x 16
<b>Edge Profile</b>	Squared   Tapered

**APPLICATION AREAS:** Offices / Education / Healthcare / Retail / Corridors / Lobbies

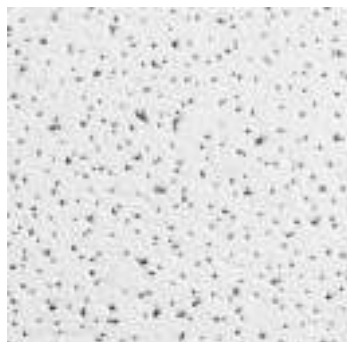
## Armstrong DUNE MAX Ceiling Tile



<b>Material</b>	Mineral Fiber
<b>Brand</b>	Armstrong Ceiling Solutions
<b>Ceiling Type</b>	Exposed Grid
<b>Noise Reduction Coefficient (NRC)</b>	0.70
<b>Humidity Resistance</b>	99% RH
<b>Thickness</b>	20 mm
<b>Size (ft)</b>	Tiles: 2 x 2   2 x 4 Panels: 1 x 4
<b>Dimensions (mm)</b>	Tiles: 600 x 600 x 20 600 x 1200 x 20 Panels: 300 x 1200 x 20
<b>Edge Profile</b>	Squared   Tapered

**APPLICATION AREAS:** Offices / Call Centre / Education / Retail / Conference Rooms / Auditoriums / Corridors / Lobbies

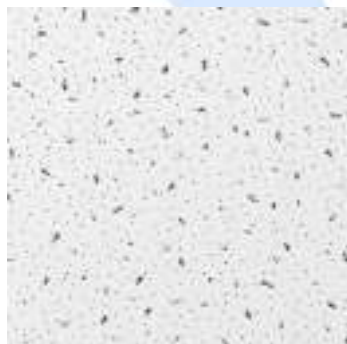
## Armstrong FINE FISSURED Ceiling Tile



<b>Material</b>	Mineral Fiber
<b>Brand</b>	Armstrong Ceiling Solutions
<b>Ceiling Type</b>	Exposed Grid
<b>Noise Reduction Coefficient (NRC)</b>	0.60   0.70
<b>Humidity Resistance</b>	99% RH
<b>Thickness</b>	16 mm
<b>Size (ft)</b>	Tiles: 2 x 2   2 x 4 Panels: 1 x 4
<b>Dimensions (mm)</b>	Tiles: 600 x 600 x 16 600 x 1200 x 16 Panels: 300 x 1200 x 16
<b>Edge Profile</b>	Squared   Tapered

**APPLICATION AREAS:** Offices / Education / Healthcare / Retail / Corridors / Lobbies

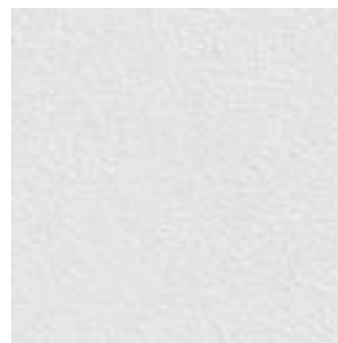
## Armstrong ANF Ceiling Tile



<b>Material</b>	Mineral Fiber
<b>Brand</b>	Armstrong Ceiling Solutions
<b>Ceiling Type</b>	Exposed Grid
<b>Noise Reduction Coefficient (NRC)</b>	0.50
<b>Humidity Resistance</b>	95% RH
<b>Thickness</b>	15 mm
<b>Size (ft)</b>	2 x 2
<b>Dimensions (mm)</b>	600 x 600 x 15
<b>Edge Profile</b>	Squared   Tapered

**APPLICATION AREAS:** Small Offices / Education / Retail / Corridors / Lobbies

## Armstrong OPTRA Ceiling Tile



<b>Material</b>	Mineral Fiber
<b>Brand</b>	Armstrong Ceiling Solutions
<b>Ceiling Type</b>	Exposed Grid
<b>Noise Reduction Coefficient (NRC)</b>	0.90
<b>Humidity Resistance</b>	95% RH
<b>Thickness (mm)</b>	15   20   25
<b>Size (ft)</b>	Tiles: 2 x 2   2 x 4   2 x 6 Panels: 1 x 4
<b>Dimensions (mm)</b>	Tiles: 600 x 600 x 15 600 x 1200 x 15 600 x 600 x 20 600 x 1200 x 20 600 x 1800 x 20 600 x 600 x 25 600 x 1200 x 25 Panels: 300 x 1200 x 15
<b>Edge Profile</b>	Squared   Tapered

**APPLICATION AREAS:** Open plan offices / Call Centres (IT/ITRS) / Large conference Rooms / Education / Theatres / auditoriums

## Armstrong OPTRA BLACK Ceiling Tile



<b>Material</b>	Mineral Fiber
<b>Brand</b>	Armstrong Ceiling Solutions
<b>Ceiling Type</b>	Exposed Grid
<b>Noise Reduction Coefficient (NRC)</b>	0.90
<b>Humidity Resistance</b>	95% RH
<b>Thickness (mm)</b>	15   20   25
<b>Size (ft)</b>	2 x 2   2 x 4   2 x 6
<b>Dimensions (mm)</b>	600 X 1200 X 15 600 X 600 X 20 600 X 1200 X 20 600 X 1800 X 20 600 X 1200 X 25
<b>Edge Profile</b>	Squared   Tapered

**APPLICATION AREAS:** Open plan offices / Call Centres (IT/ITRS) / Large conference Rooms / Education / Theatres / auditoriums

## Gypsum Ceiling Tiles



From Acoustical Tiles for Auditoriums, Conference Rooms & Educational Institutes to Stylish Ceiling Tiles for aesthetics & easy to clean applications in offices, boutiques, shops etc. From specialized tiles for Hygienic, Health & Clean Room Application for Healthcare, Infrastructure, Pharmaceutical labs to Maintenance Free & Moisture Resistant Tiles for wet area application. Gypsum ceiling tiles range makes it easy to create the right ceiling for any space.



### Gyproc CASOFINA Ceiling Tile

<b>Material</b>	Gypsum
<b>Brand</b>	Gyproc by Saint Gobain
<b>Ceiling Type</b>	Exposed Grid   Concealed Grid
<b>Thickness</b>	9 mm
<b>Size (ft)</b>	2 x 2
<b>Dimensions (mm)</b>	595 x 595 x 9
<b>Edge Profile</b>	Squared   Tapered

These are pre-painted ceiling panels which are coated with a special paint which is cleanable and has anti-mould growth and anti-yellowing properties.



### Gyproc CASOSTAR Ceiling Tile

<b>Material</b>	Gypsum
<b>Brand</b>	Gyproc by Saint Gobain
<b>Ceiling Type</b>	Exposed Grid   Concealed Grid
<b>Thickness</b>	9 mm
<b>Size (ft)</b>	2 x 2
<b>Dimensions (mm)</b>	595 x 595 x 9
<b>Edge Profile</b>	Squared   Tapered

These are pre-painted ceiling panels which are coated with a special paint which is cleanable and has anti-mould growth and anti-yellowing properties.



### Gyproc SUNDANCE Ceiling Tile

<b>Material</b>	Gypsum
<b>Brand</b>	Gyproc by Saint Gobain
<b>Ceiling Type</b>	Exposed Grid   Concealed Grid
<b>Thickness</b>	12.5 mm
<b>Size (ft)</b>	2 x 2
<b>Dimensions (mm)</b>	595 x 595 x 12.5
<b>Edge Profile</b>	Squared

This is an unpainted ceiling panel has round semi-perforations in a random pattern and is economical, durable and dimensionally stable.

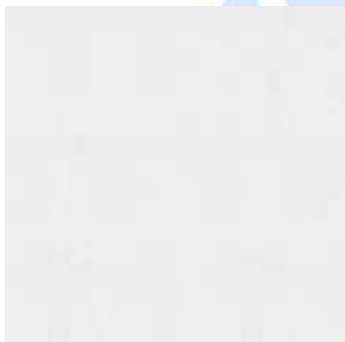




### USG Boral STARFISH Ceiling Tile

<b>Material</b>	Gypsum
<b>Brand</b>	USG Boral
<b>Ceiling Type</b>	Exposed Grid   Concealed Grid
<b>Thickness</b>	12 mm
<b>Size (ft)</b>	2 x 2
<b>Dimensions (mm)</b>	600 x 600 x 12
<b>Edge Profile</b>	Squared

Exhibiting high light performance ability, Starfish Gypsum Ceiling Tiles is bought to get a well decorated surface with durability as its essence.



### USG Boral WHITE SAND SLIM Ceiling Tile

<b>Material</b>	Gypsum
<b>Brand</b>	USG Boral
<b>Ceiling Type</b>	Exposed Grid   Concealed Grid
<b>Thickness</b>	7 mm
<b>Size (ft)</b>	2 x 2
<b>Dimensions (mm)</b>	600 x 600 x 7
<b>Edge Profile</b>	Squared

High light reflectance and withstanding humid conditions are the properties that add to the growth factor of White Sand Slim Gypsum Ceiling Tiles.



### USG Boral BALLOONFISH Ceiling Tile

<b>Material</b>	Gypsum
<b>Brand</b>	USG Boral
<b>Ceiling Type</b>	Exposed Grid   Concealed Grid
<b>Thickness</b>	12 mm
<b>Size (ft)</b>	2 x 2
<b>Dimensions (mm)</b>	600 x 600 x 12
<b>Edge Profile</b>	Squared

Accessible with a texture design, Balloon Fish Gypsum Ceiling Tiles has managed to gain accolades for excellent light reflectance quality.

## Metal Ceiling Tiles



Capabilities meet function in our large portfolio of commercial metal ceilings. You'll find the broadest range of metal ceiling tiles in curves, clouds, panels, and planks in standard, custom, or one-of-a-kind looks to meet both your design and functional needs. Durable metal ceilings create an impressive visual impact in spaces-meeting demands of high traffic areas to just plain looking sleek.

Along with design flexibility, metal ceilings can deliver strong acoustic performance. Metal ceiling tiles are available in a range of perforation choices and colors- from standard to custom to one-of-a-kind to satisfy your unique acoustical needs.





## Metal LAY-IN Ceiling Tile

<b>Material</b>	Galvanised Iron (G.I.)   Aluminium
<b>Ceiling Type</b>	Exposed Grid
<b>Pattern</b>	Plain   Perforated
<b>Overall Tile Thickness</b>	25 mm
<b>Base Metal Thickness (mm)</b>	0.50   0.70
<b>Size (ft)</b>	2 x 2   2 x 4
<b>Dimensions (mm)</b>	600 x 600 x 0.5 600 x 600 x 0.7 600 x 1200 x 0.5 600 x 1200 x 0.7
<b>Edge Profile</b>	Tegular

MetalWorks Lay-In is a modular metal ceiling system. It provides a contemporary look and offers easy accessibility to plenum space.



## Metal CLIP-IN Ceiling Tile

<b>Material</b>	Galvanised Iron (G.I.)   Aluminium
<b>Ceiling Type</b>	Concealed Grid
<b>Pattern</b>	Plain   Perforated
<b>Overall Tile Thickness</b>	27.5 mm
<b>Base Metal Thickness (mm)</b>	0.50   0.70
<b>Size (ft)</b>	2 x 2   2 x 4
<b>Dimensions (mm)</b>	600 x 600 x 0.5 600 x 600 x 0.7 600 x 1200 x 0.5 600 x 1200 x 0.7
<b>Edge Profile</b>	Squared

MetalWorks Clip-In is a concealed suspension offering a sleek, monolithic appearance. Offers 100% downward accessibility with panel removal tool.



## Metal Ceilings OPEN CELL

<b>Material</b>	Galvanised Iron (G.I.)   Aluminium
<b>Ceiling Type</b>	Exposed Grid
<b>Base Metal Thickness (mm)</b>	0.50   0.70
<b>Cell Grid Thickness (mm)</b>	5   10
<b>Height (mm)</b>	38   50
<b>Cell Dimensions (mm)</b>	75 x 75 100 x 100 150 x 150 600 x 600
<b>Edge Profile</b>	Squared

MetalWorks Open Cell creates a modern, open look for unique spaces. It is a standard lay-in panel that is installed on a 15mm grid.



## Metal Ceilings LINEAR BAFFLE

<b>Material</b>	Galvanized Iron (G.I.)   Aluminium
<b>Ceiling Type</b>	Concealed Grid
<b>Pattern</b>	Linear Baffles
<b>Panel Length</b>	12 ft
<b>Base Metal Thickness (mm)</b>	0.50   0.70
<b>Panel Height (mm)</b>	100   150
<b>Panel Width (mm)</b>	25   50
<b>Dimensions (mm)</b>	25 x 50 x 3600 25 x 100 x 3600 25 x 150 x 3600 25 x 200 x 3600 50 x 150 x 3600
<b>Edge Profile</b>	Squared

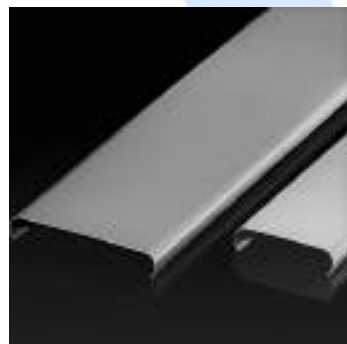
Metalworks Baffles is an attractive, linear system that screens the open plenum beautifully. Clean crisp detailing and detachable suspension. Fully adjustable spacing. Robust, engineered system. Quick and easy to install.



## Metal Ceilings LINEAR Panel 84C/184C

<b>Material</b>	Galvanized Iron (G.I.)   Aluminium
<b>Ceiling Type</b>	Concealed Grid
<b>Pattern</b>	Linear Ceiling 84C / 184C
<b>Panel Length</b>	12 ft
<b>Base Metal Thickness (mm)</b>	0.50   0.70
<b>Dimensions (mm)</b>	20 x 16 x 84 x 3600 20 x 16 x 184 x 3600
<b>Edge Profile</b>	Squared

- ◆ Box type panel of 84 mm/184 mm flange
- ◆ Gives clean closed look which helps in applications where hygiene is must
- ◆ Optimum acoustical control by using perforated panel and nonwoven felt
- ◆ Demountable panels allowing full access to plenum



## Metal Ceilings LINEAR Panel 84R/184R/284R

<b>Material</b>	Galvanized Iron (G.I.)   Aluminium
<b>Ceiling Type</b>	Concealed Grid
<b>Pattern</b>	Linear Ceiling 84R / 184R / 284R
<b>Panel Length</b>	12 ft
<b>Base Metal Thickness (mm)</b>	0.50   0.70
<b>Dimensions (mm)</b>	20 x 16 x 84 x 3600 20 x 16 x 184 x 3600 20 x 16 x 284 x 3600
<b>Edge Profile</b>	Squared

- ◆ Rounded Edge Panels which can be easily clipped on 84R / 184R / 284R Carrier
- ◆ Provide 16% open area. Can be closed using Flush Profile
- ◆ Optimum Acoustical control by using perforated Panel and non-woven felt
- ◆ De-mountable panels allowing full access to plenum



## Metal Ceilings LINEAR Panel 150F/250F

<b>Material</b>	Galvanized Iron (G.I.)   Aluminium
<b>Ceiling Type</b>	Concealed Grid
<b>Pattern</b>	Linear Ceiling 150F / 250F
<b>Panel Length</b>	12 ft
<b>Base Metal Thickness (mm)</b>	0.50   0.70
<b>Dimensions (mm)</b>	20 x 16 x 150 x 3600 20 x 16 x 250 x 3600
<b>Edge Profile</b>	Squared

- ◆ Interlocking grooves to restrict passage of water/air
- ◆ Extensively used for exterior cladding (wall cladding, building facades)
- ◆ Clear lines and joint for perfect symmetry
- ◆ Ideally suitable for petrol pumps

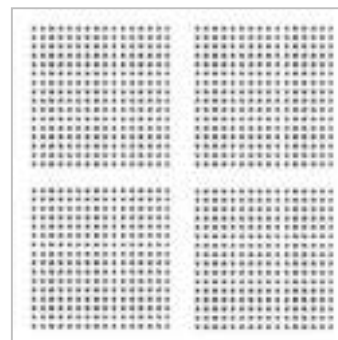
## Perforated Ceiling Tiles



Perforated ceiling tiles are available in a variety of standard hole patterns, which can achieve up to 0.85 NRC values. Hole sizes range from 5mm – 10mm diameter and 16mm or 32mm pitch. We also offer customized perforated acoustic ceiling tiles to meet any project requirements and can route to custom sizes and provide different edge details. They are often used in hotels, hotel, home theater, prisons, broadcasting studios, gymnasium and multifunctional rooms, music rooms, restaurants and nightclubs, training rooms, and so on.

Data sheets of perforated ceiling panels are available for some standard patterns showing open area and NRC values. If required, we can also offer acoustic wool to help increase acoustic performance. There is a layer of acoustic fleece glued on our perforated ceiling tile which could help to prevent degraded acoustical wool and dust from going down.

## Gyproc FULTONE Ceiling Tile



<b>Material</b>	Gypsum
<b>Brand</b>	Gyproc by Saint Gobain
<b>Ceiling Type</b>	Exposed Grid   Concealed Grid
<b>Noise Reduction Coefficient (NRC)</b>	0.85   0.88
<b>Hole Size (mm)</b>	10 x 10
<b>Hole Spacing</b>	30 mm centre to centre
<b>Thickness</b>	12.5 mm
<b>Size (ft)</b>	2 x 2
<b>Dimensions (mm)</b>	595 x 595 x 12.5
<b>Perforation Area</b>	18%
<b>Edge Profile</b>	Squared

This ceiling panel is unpainted with fully perforated square holes in a regular pattern and is backed with a special non-woven lining. It has excellent sound absorption properties when backed with glass wool insulation matt.

## Gyproc GYPTONE QUATTRO 41 Acoustical Board



<b>Material</b>	Gypsum
<b>Brand</b>	Gyproc by Saint Gobain
<b>Ceiling Type</b>	Exposed Grid   Concealed Grid
<b>Noise Reduction Coefficient (NRC)</b>	0.60   0.65   0.77   0.80
<b>Hole Size (mm)</b>	12 x 12
<b>Hole Spacing</b>	25 mm centre to centre
<b>Thickness</b>	12.5 mm
<b>Size (ft)</b>	4 x 8
<b>Dimensions (mm)</b>	1200 x 2400 x 12.5
<b>Perforation Area</b>	16%
<b>Edge Profile</b>	Tapered

All four side tapered perforated Gypsum Acoustical board having eight quadrants of square shaped perforations of 12x12mm and backed by an acoustical fleece.



## Gyproc GYPTONE SIXTO 63 Acoustical Board

<b>Material</b>	Gypsum
<b>Brand</b>	Gyproc by Saint Gobain
<b>Ceiling Type</b>	Exposed Grid   Concealed Grid
<b>Noise Reduction Coefficient (NRC)</b>	0.60   0.70   0.80
<b>Hole Size (mm)</b>	12 mm Hexagonal
<b>Hole Spacing</b>	20 mm centre to centre
<b>Thickness</b>	12.5 mm
<b>Size (ft)</b>	4 x 8
<b>Dimensions (mm)</b>	1200 x 2400 x 12.5
<b>Perforation Area</b>	16%
<b>Edge Profile</b>	Tapered

Gyptone Sixto 63 comprises a 12.5mm gypsum core, with a geometric array of hexagonal perforations. The reverse of the board incorporates an acoustic fleece which provides sound absorption performance.

## Gyproc RIGITONE ACTIV AIR 12-20-35 Acoustical Board



<b>Material</b>	Gypsum
<b>Brand</b>	Gyproc by Saint Gobain
<b>Ceiling Type</b>	Exposed Grid   Concealed Grid
<b>Noise Reduction Coefficient (NRC)</b>	0.55   0.65
<b>Hole Size (mm)</b>	12 mm   20 mm   35 mm diameter
<b>Hole Spacing</b>	Scattered
<b>Thickness</b>	12.5 mm
<b>Size (ft)</b>	4 x 6.5
<b>Dimensions (mm)</b>	1200 x 1980 x 12.5
<b>Perforation Area</b>	10%
<b>Edge Profile</b>	Tapered

Perforated Gypsum Acoustical board having 12, 20 & 35 mm diameter end to end irregularly scattered round perforations and backed by an acoustical fleece and having Activ'Air cleaning powder to ensure sustainable reduction in air pollutants such as formaldehyde.

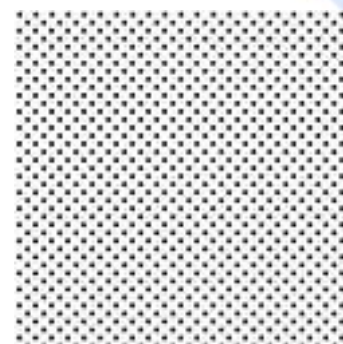


## Gyproc RIGITONE ACTIV AIR 8/18 Acoustical Board

<b>Material</b>	Gypsum
<b>Brand</b>	Gyproc by Saint Gobain
<b>Ceiling Type</b>	Exposed Grid   Concealed Grid
<b>Noise Reduction Coefficient (NRC)</b>	0.60   0.65
<b>Hole Size (mm)</b>	8 mm diameter
<b>Hole Spacing</b>	18 mm centre to centre
<b>Thickness</b>	12.5 mm
<b>Size (ft)</b>	4 x 6.5
<b>Dimensions (mm)</b>	1200 x 1980 x 12.5
<b>Perforation Area</b>	15.5%
<b>Edge Profile</b>	Tapered

Perforated Gypsum Acoustical board having 8mm diameter at 18mm center to center end to end regular round perforations and backed by an acoustical fleece and having Activ'Air cleaning powder to ensure sustainable reduction in air pollutants such as formaldehyde.

## Armstrong RG6011 Ceiling Tile



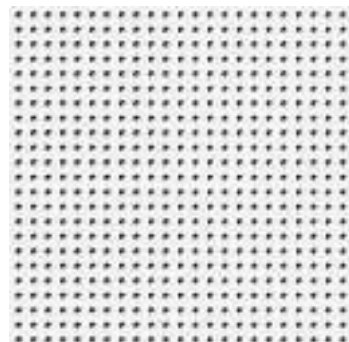
<b>Material</b>	Mineral Fiber
<b>Brand</b>	Armstrong Ceiling Solutions
<b>Ceiling Type</b>	Exposed Grid   Concealed Grid
<b>Noise Reduction Coefficient (NRC)</b>	0.60   0.65
<b>Hole Size (mm)</b>	12 mm diameter
<b>Hole Spacing</b>	18 mm centre to centre (cross pattern)
<b>Thickness</b>	12 mm
<b>Size (ft)</b>	2 x 2   2 x 4
<b>Dimensions (mm)</b>	600 x 600 x 12 600 x 1200 x 12
<b>Perforation Area</b>	15%
<b>Edge Profile</b>	Squared   Tapered

Perforated ceiling panels are used in hotels, hotel, home theater, prisons, broadcasting studios, gymnasium and multifunctional rooms, music rooms, restaurants and nightclubs, training rooms, and so on.



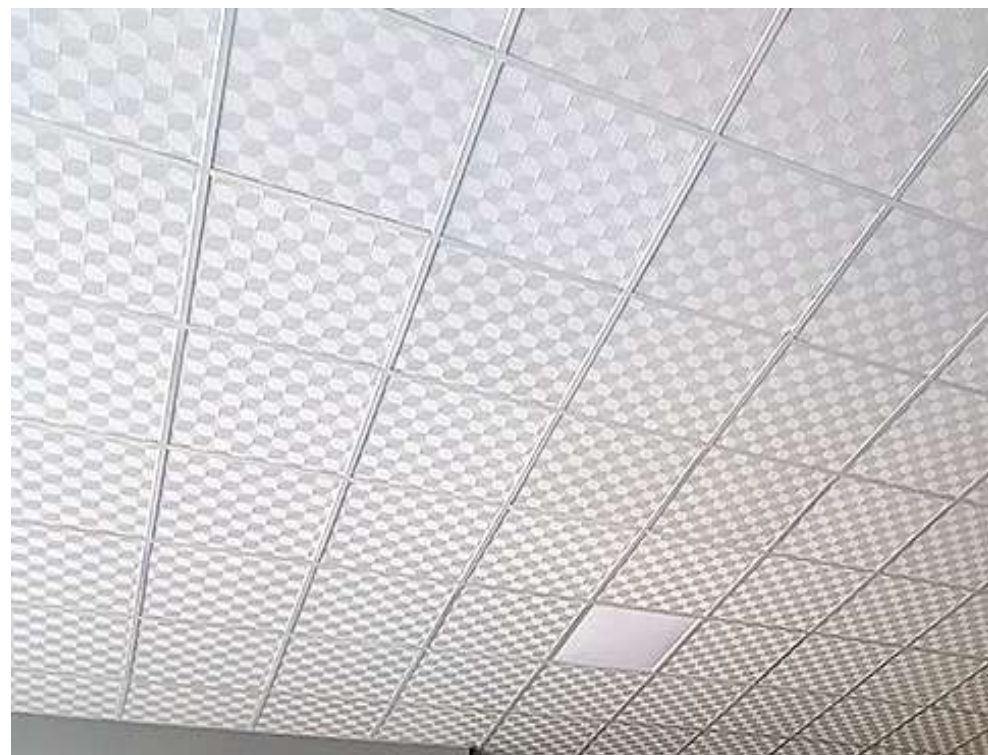
## Armstrong RD6006 Ceiling Tile

<b>Material</b>	Mineral Fiber
<b>Brand</b>	Armstrong Ceiling Solutions
<b>Ceiling Type</b>	Exposed Grid   Concealed Grid
<b>Noise Reduction Coefficient (NRC)</b>	0.60   0.65
<b>Hole Size (mm)</b>	20 mm diameter
<b>Hole Spacing</b>	25 mm centre to centre
<b>Thickness</b>	12 mm
<b>Size (ft)</b>	2 x 2   2 x 4
<b>Dimensions (mm)</b>	600 x 600 x 12 600 x 1200 x 12
<b>Perforation Area</b>	18%
<b>Edge Profile</b>	Squared   Tapered



Perforated ceiling panels are used in hotels, hotel, home theater, prisons, broadcasting studios, gymnasium and multifunctional rooms, music rooms, restaurants and nightclubs, training rooms, and so on.

## PVC Laminated Ceiling Tiles



We are an eminent supplier of PVC Laminated Gypsum Ceiling Tiles to our widely spread clients. They find application at different places like offices, homes, hotels, hospitals, etc. as per our customers' requirements. Optimum quality raw material is used in their designing at our unit along with the help of technologically advanced machinery under the vigilant eye of experts. PVC Laminated Gypsum Ceiling Tiles are known for their high strength, durability, finishing, quality, and crack resistance. We strive to deliver these tiles on time.

### Features:

- ▶ Highly strong
- ▶ Feasible Prices
- ▶ Unmatched Durability
- ▶ Crack Resistant



### Gyproc GRANULAR Ceiling Tile

<b>Material</b>	Gypsum
<b>Brand</b>	Gyproc by Saint Gobain
<b>Ceiling Type</b>	Exposed Grid
<b>Surface Treatment</b>	0.07 mm textured Polyvinyl Chloride (PVC) film lamination
<b>Thickness</b>	9 mm
<b>Size (ft)</b>	2 x 2
<b>Dimensions (mm)</b>	595 x 595 x 9
<b>Edge Profile</b>	Squared

This ceiling panel is laminated with a PVC film on the face side, Metalised polyester film on back side and is available in a granular texture.



### Gyproc DEW DROP Ceiling Tile

<b>Material</b>	Gypsum
<b>Brand</b>	Gyproc by Saint Gobain
<b>Ceiling Type</b>	Exposed Grid
<b>Surface Treatment</b>	0.07 mm textured Polyvinyl Chloride (PVC) film lamination
<b>Thickness</b>	9 mm
<b>Size (ft)</b>	2 x 2
<b>Dimensions (mm)</b>	595 x 595 x 9
<b>Edge Profile</b>	Squared

This ceiling panel is laminated with a PVC film on the face side, Metalised polyester film on back side and is available in a dew drop texture.



### Gyproc POLYSHIELD Ceiling Tile

<b>Material</b>	Gypsum
<b>Brand</b>	Gyproc by Saint Gobain
<b>Ceiling Type</b>	Exposed Grid
<b>Surface Treatment</b>	0.16 mm textured Polyvinyl Chloride (PVC) film lamination
<b>Thickness (mm)</b>	9.5   12.5
<b>Size (ft)</b>	2 x 2
<b>Dimensions (mm)</b>	595 x 595 x 9.5 595 x 595 x 12.5
<b>Edge Profile</b>	Squared

This ceiling panel is laminated with a PVC film on the face side, Metalised polyester film on back side and is available in a dew drop texture.



### KD – Design No. 247 Ceiling Tile

<b>Material</b>	Gypsum
<b>Ceiling Type</b>	Exposed Grid
<b>Surface Treatment</b>	Polyvinyl Chloride (PVC) film lamination
<b>Thickness</b>	8 mm
<b>Size (ft)</b>	2 x 2
<b>Dimensions (mm)</b>	595 x 595 x 8

This ceiling panel is laminated with a PVC film on the face side, Metalised polyester film on back side and is available in a dew drop texture.



### KD – Design No. 154 Ceiling Tile

<b>Material</b>	Gypsum
<b>Ceiling Type</b>	Exposed Grid
<b>Surface Treatment</b>	Polyvinyl Chloride (PVC) film lamination
<b>Thickness</b>	8 mm
<b>Size (ft)</b>	2 x 2
<b>Dimensions (mm)</b>	595 x 595 x 8

This ceiling panel is laminated with a PVC film on the face side, Metalised polyester film on back side and is available in a dew drop texture.



### KD – Design No. 975 Ceiling Tile

<b>Material</b>	Gypsum
<b>Ceiling Type</b>	Exposed Grid
<b>Surface Treatment</b>	Polyvinyl Chloride (PVC) film lamination
<b>Thickness</b>	8 mm
<b>Size (ft)</b>	2 x 2
<b>Dimensions (mm)</b>	595 x 595 x 8

This ceiling panel is laminated with a PVC film on the face side, Metalised polyester film on back side and is available in a dew drop texture.



### KD – Design No. 238 Ceiling Tile

<b>Material</b>	Gypsum
<b>Ceiling Type</b>	Exposed Grid
<b>Surface Treatment</b>	Polyvinyl Chloride (PVC) film lamination
<b>Thickness</b>	8 mm
<b>Size (ft)</b>	2 x 2
<b>Dimensions (mm)</b>	595 x 595 x 8

This ceiling panel is laminated with a PVC film on the face side, Metalised polyester film on back side and is available in a dew drop texture.



### KD – Design No. 996 Ceiling Tile

<b>Material</b>	Gypsum
<b>Ceiling Type</b>	Exposed Grid
<b>Surface Treatment</b>	Polyvinyl Chloride (PVC) film lamination
<b>Thickness</b>	8 mm
<b>Size (ft)</b>	2 x 2
<b>Dimensions (mm)</b>	595 x 595 x 8

This ceiling panel is laminated with a PVC film on the face side, Metalised polyester film on back side and is available in a dew drop texture.



### KD – Design No. 569 Ceiling Tile

<b>Material</b>	Gypsum
<b>Ceiling Type</b>	Exposed Grid
<b>Surface Treatment</b>	Polyvinyl Chloride (PVC) film lamination
<b>Thickness</b>	8 mm
<b>Size (ft)</b>	2 x 2
<b>Dimensions (mm)</b>	595 x 595 x 8

This ceiling panel is laminated with a PVC film on the face side, Metalised polyester film on back side and is available in a dew drop texture.

## SUSPENDED CEILING GRID SYSTEM



T-Grids help support to achieve desired final look with varied range of sizes, patterns & edge profiles. Post Installation maintenance friendly & Easy Servicing are the key highlights of T-Grids components & system.

T-Grids are designed using quality approved material under the direction of vendor's skilled professionals along with market trends. Widely used ceilings covering, we offer these T grids in various dimensions at reasonable price. T grids are available in different dimensions. To avoid any kind of defect in it, these T grids are stringently tested on quality parameters. The offered T grids are designed by vendor's experts by using excellent quality gypsum.

## Components of T-Grid



### Main-T

Main Ts are suspended by suspension system and carry the weight of the Grid system. These Ts have a system of interlocking with each other in order to provide an additional length and thus form a continuous mesh across the space where they are used.

### Cross-T

Cross Ts are used intermittently at the specified distances and are inter locked with the Main Ts. Typically, the Cross Ts are of 2 sizes: 1200 mm and 600 mm. They thus form modules which makes a mesh/grid.



### Wall Angle

Wall angle is fixed to the perimeter of the wall at the ceiling level to hold the Main Ts and gives a finish when it terminates on the wall.



T24 Plain

### T24 PLAIN T-Grid

Component	Length (mm)	Width (mm)	Height (mm)	Thickness (mm)
Main-T	3000	24	38	0.30
Cross-T	1200	24	25	0.30
Cross-T	600	24	25	0.30
Wall Angle	3000	24	24	0.40



T15 Plain

### T15 PLAIN T-Grid

Component	Length (mm)	Width (mm)	Height (mm)	Thickness (mm)
Main-T	3000	15	32	0.30
Cross-T	1200	15	25	0.30
Cross-T	600	15	25	0.30
Wall Angle	3000	15	15	0.40





T24 Centre Black

### T24 CENTRE BLACK T-Grid

Component	Length (mm)	Width (mm)	Height (mm)	Thickness (mm)
Main-T	3000	24	32	0.30
Cross-T	1200	24	32	0.30
Cross-T	600	24	32	0.30
Wall Angle	3000	24	24	0.40



T15 Centre Black

### T15 CENTRE BLACK T-Grid

Component	Length (mm)	Width (mm)	Height (mm)	Thickness (mm)
Main-T	3000	15	32	0.30
Cross-T	1200	15	32	0.30
Cross-T	600	15	32	0.30
Wall Angle	3000	15	15	0.40



T15 Silhouette

### T15 SILHOUETTE T-Grid

Component	Length (mm)	Width (mm)	Height (mm)	Thickness (mm)
Main-T	3000	15	38	0.30
Cross-T	1200	15	38	0.30
Cross-T	600	15	38	0.30
Wall Angle	3000	15	15	0.40

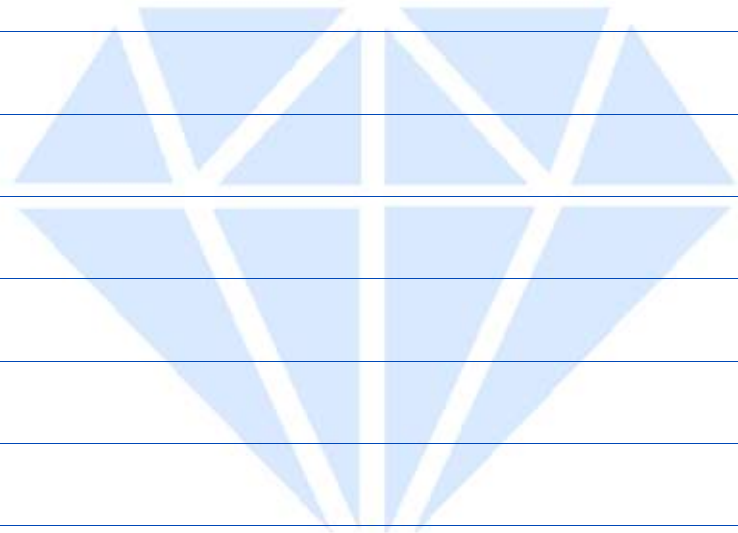


Wall Angle

### WALL ANGLE

Component	Length (mm)	Width (mm)	Height (mm)	Thickness (mm)
T15 Wall Angle	3000	15	15	0.40
T24 Wall Angle	1200	24	24	0.40

## NOTES



## CONTACT US

**Contact No.:** +91 9822232309 | +91 9371080486

**Email:** info@kohinoordecor.in

**Website:** www.kohinoordecor.in

**Address:** Kohinoor Plaster, Milan Hall, Siddharth Nagar, Teka Naka, Kamptee Road, Nagpur, Maharashtra - 440017



[www.kohinoordecor.in](http://www.kohinoordecor.in)